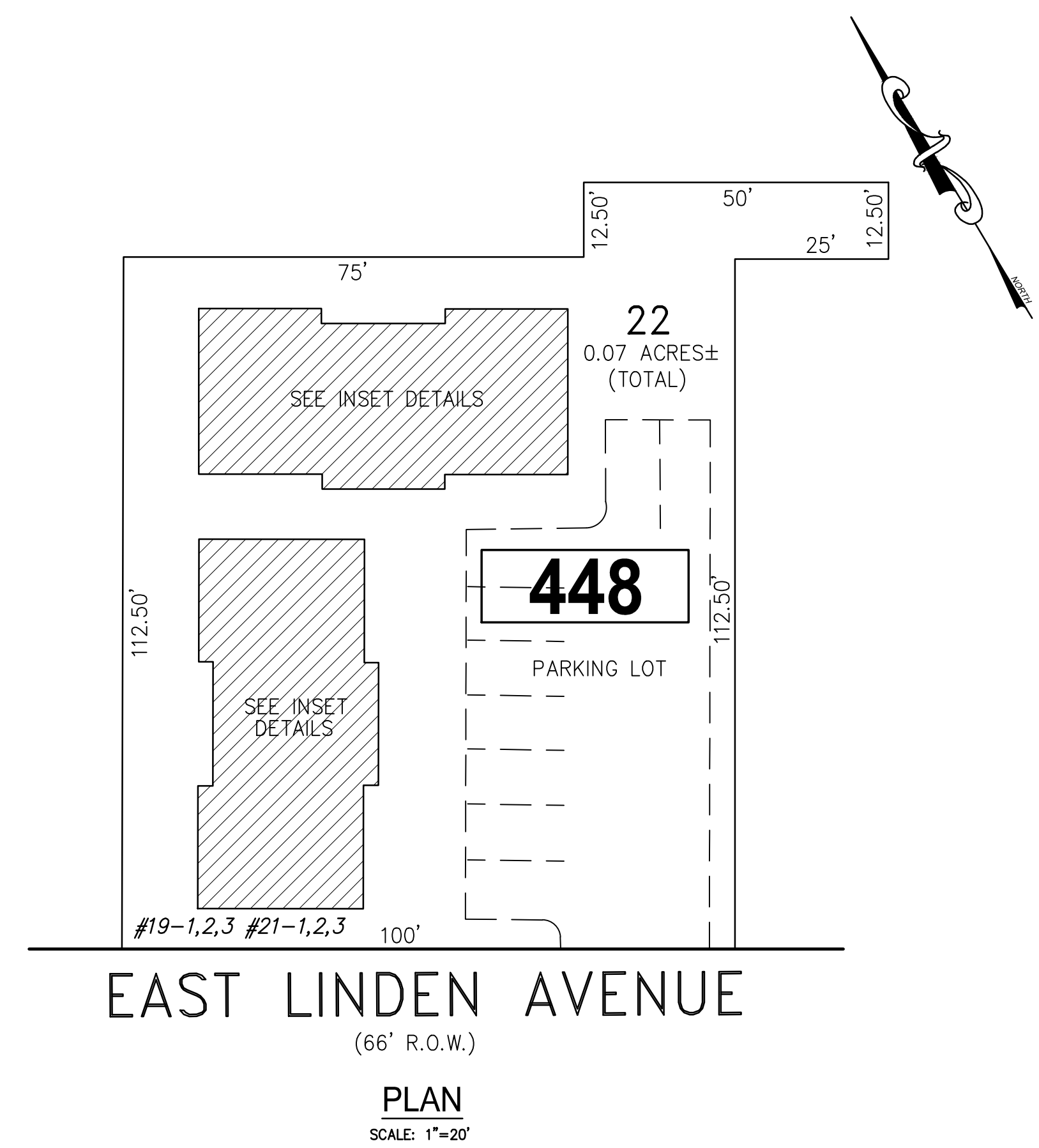
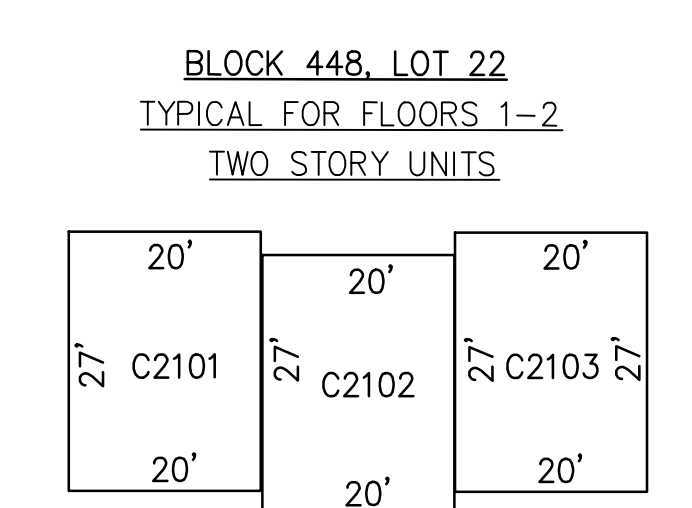


| REVISIONS |      |     |
|-----------|------|-----|
| DATE      | NAME | NO. |
|           |      |     |
|           |      |     |
|           |      |     |
|           |      |     |
|           |      |     |
|           |      |     |
|           |      |     |
|           |      |     |
|           |      |     |
|           |      |     |

**NOTE:**  
THIS SHEET HAS BEEN DRAWN USING COMPUTER AIDED DRAFTING/DESIGN (CAD/D) AND COORDINATE GEOMETRY (COGO).



**EAST LINDEN AVENUE**  
(66' R.O.W.)  
**PLAN**  
SCALE: 1"=20'



| CONDO QUALIFIER | SQUARE FOOTAGE |
|-----------------|----------------|
| C1901           | 540 SF.        |
| C1902           | 540 SF.        |
| C1903           | 540 SF.        |
| C2101           | 540 SF.        |
| C2102           | 540 SF.        |
| C2103           | 540 SF.        |

**DETAILS**  
SCALE: 1"=20'

**BLOCK 448, LOT 22**  
**LINDEN TOWERS CONDOMINIUM**  
**19 EAST LINDEN AVE**

BLOCK 448, LOT 22  
SEE SHEET 104

**TAX MAP**  
**CITY OF LINDEN**

UNION COUNTY NEW JERSEY  
SCALE: NOTED DATE: 5-1-2018  
CHARLES E. ADAMSON N.J.P.L.S. LIC. NO. 42627  
**REMINGTON & VERNICK ENGINEERS**  
ONE HARMON PLAZA, SUITE 210, SECAUCUS, NJ 07094  
(201) 624-2137, FAX (201) 624-2136, WEB SITE ADDRESS: WWW.RVE.COM  
Certificate of Authorization: 24 GA 28003300  
-ENGINEERING EXCELLENCE-

