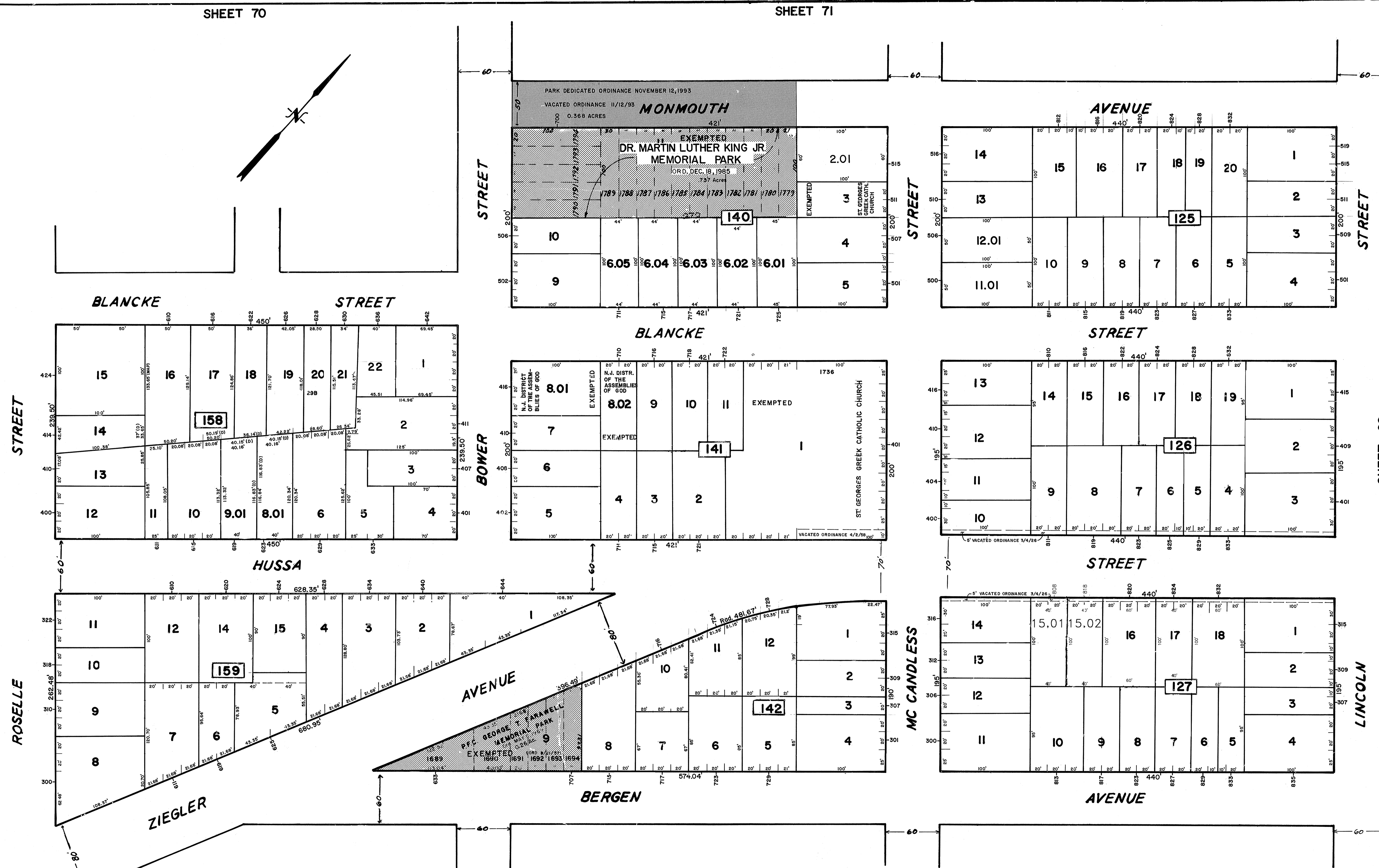


REV.	DATE	DESCRIPTION	BY
6	1/15/15	BLOCK 127 LOT 15	R.A.S.
5	1/29/07	BLOCK 149 LOTS 1 & 2	R.A.S.
4	1/22/03	BLOCK 158 LOTS 7 & 8	R.A.S.
3	1/22/03	BLOCK 140 LOTS 5, 7, 8, 9	R.A.S.
2	1/24/00	BLOCK 155 LOTS 11 & 12	R.A.S.
1	1/4/94	VACATE PART MONMOUTH AVE	R.A.S.



The Areas, Boundaries and Dimensions shown on this Tax Map are derived from Ground Surveys, Aerial Surveys and Recorded Plans, Maps, Deeds and Wills, and are to be used for Assessment Purposes only.

NEW JERSEY DEPARTMENT OF THE TREASURY
 DIVISION OF TAXATION
 PUBLIC UTILITY TAX BUREAU
 APPROVED AS A TAX MAP PURSUANT TO THE PROVISIONS OF CHAPTER 125, LAWS OF 1913, ETC. FOR THE DIRECTOR, DIVISION OF TAXATION.
 J. J. ...
 DATE: JAN 16 1974 SERIAL No. 529

TAX MAP
CITY OF LINDEN
 UNION COUNTY, NEW JERSEY
 SCALE: 1" = 50' DATE: FEBRUARY 1973
 JOHN A. ZIEMIAN - CITY ENGINEER
 THOMAS J. STRAPP - ASST. CITY ENGINEER