

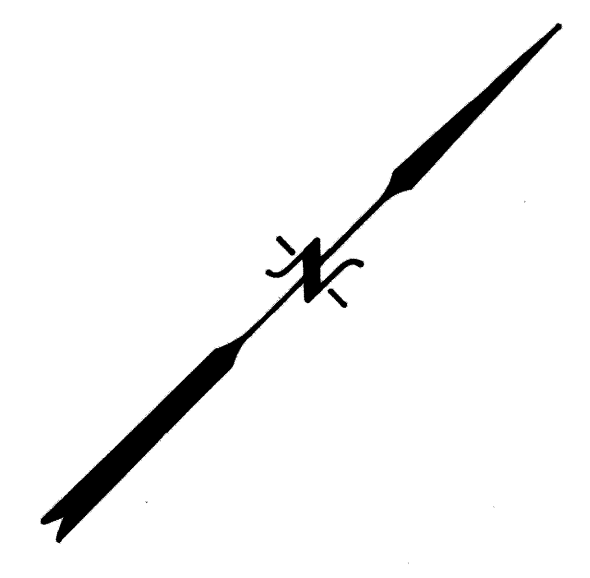
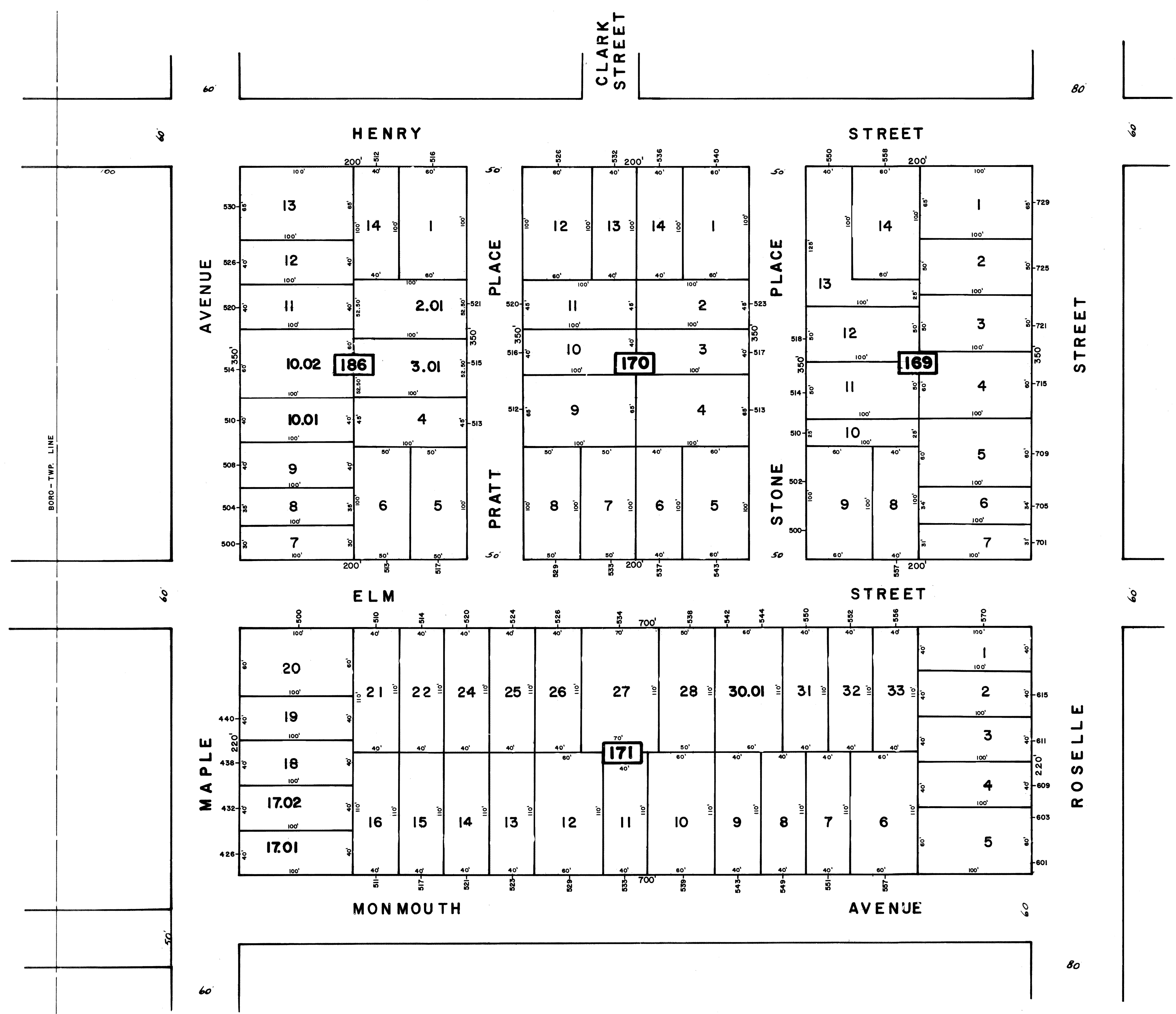
SHEET 75

SHEET 74

SHEET 62

SHEET 70

REV.	DATE	DESCRIPTION	BY
3	4/26/08	BLOCK 186 LOT 10	R.G.S.
2	7/5/03	BLOCK 171 LOTS 29 & 30	R.G.S.
1	4/9/99	BLOCK 186 LOTS 2 & 3	R.G.S.



The Areas, Boundaries and Dimensions shown on this Tax Map are derived from Ground Surveys, Aerial Surveys and Recorded Plans, Maps, Deeds and Wills, and are to be used for Assessment Purposes only.

NEW JERSEY DEPARTMENT OF THE TREASURY
 DIVISION OF TAXATION
 PUBLIC UTILITY TAX BUREAU
 APPROVED AS A TAX MAP PURSUANT TO THE PROVISIONS OF CHAPTER 175 LAWS OF 1913, ETC. FOR THE DIRECTOR, DIVISION OF TAXATION.
 BY *John A. Ziemian*, E.S. & L.S., L.C. #5008, STATE SUPERVISOR
 DATE JAN 16 1974 SERIAL No. 529

TAX MAP
 CITY OF LINDEN
 UNION COUNTY, NEW JERSEY
 SCALE: 1"=50' DATE: MARCH 1973
 JOHN A. ZIEMIAN - CITY ENGINEER
 THOMAS J. STRAPP - ASST. CITY ENGINEER

SHEET 64