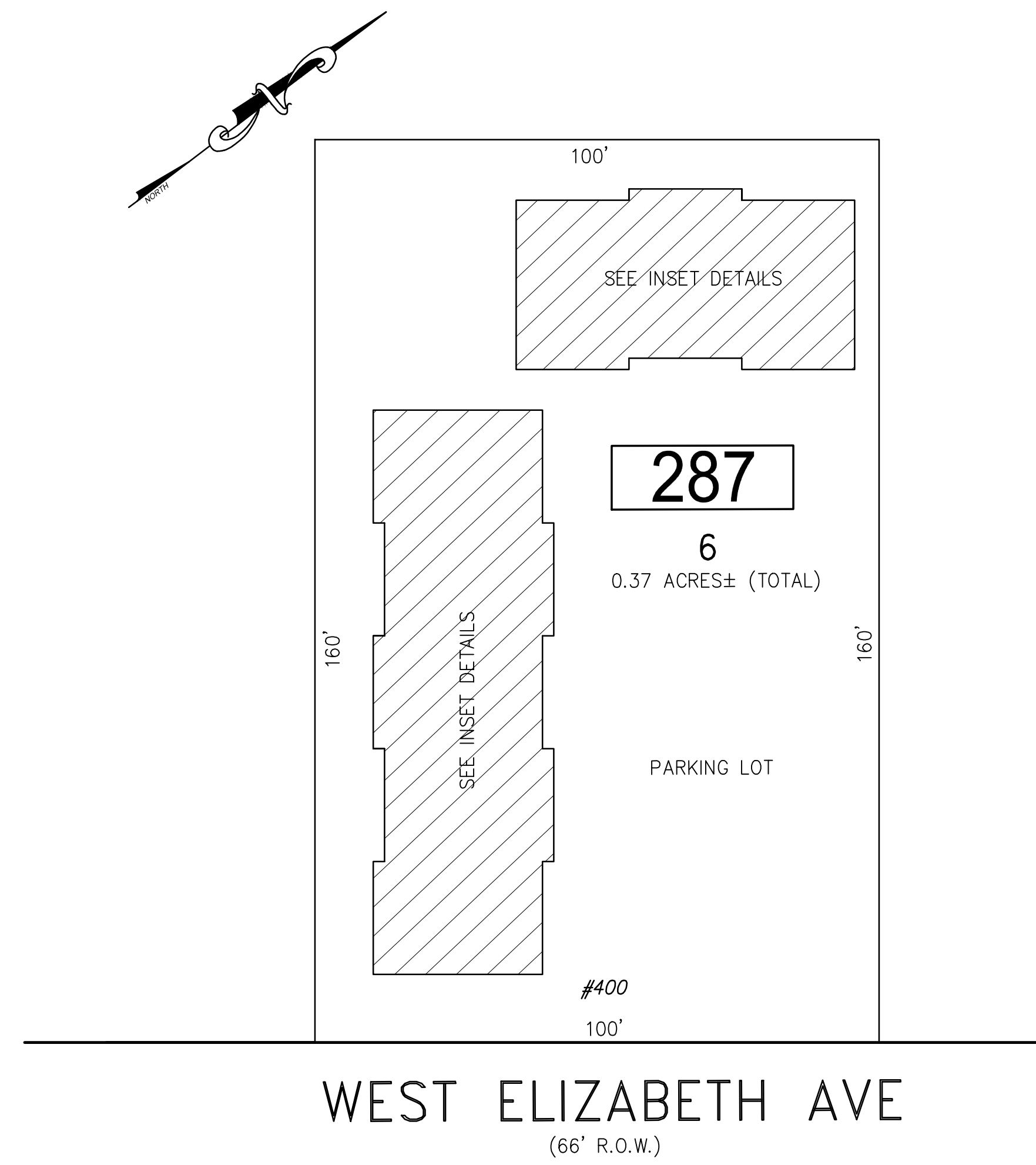
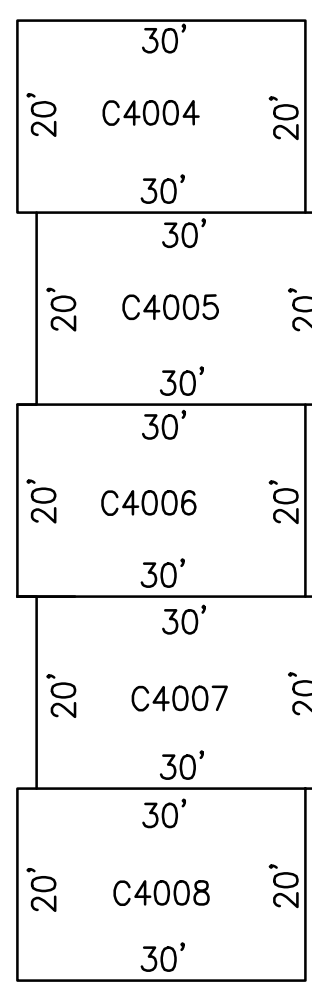
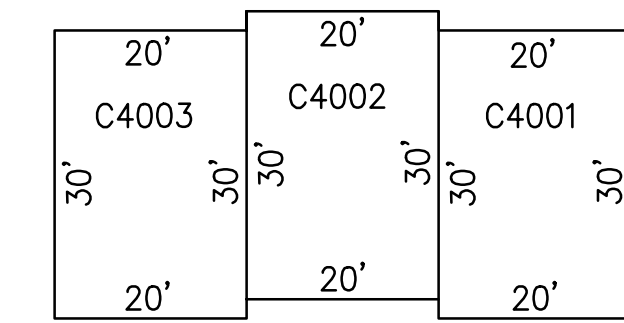


REVISIONS		
DATE	NAME	NO.

**NOTE:**  
THIS SHEET HAS BEEN DRAWN USING COMPUTER AIDED DRAFTING/DESIGN (CAD/D) AND COORDINATE GEOMETRY (COGO).



BLOCK 287, LOT 6  
TYPICAL FOR FLOORS 1-2



CONDO QUALIFIER	SQUARE FOOTAGE
C4001	600 SF.
C4002	600 SF.
C4003	600 SF.
C4004	600 SF.
C4005	600 SF.
C4006	600 SF.
C4007	600 SF.
C4008	600 SF.

**DETAILS**  
SCALE: 1"=20'

WEST ELIZABETH AVE  
(66' R.O.W.)

**PLAN**  
SCALE: 1"=20'

BLOCK 287, LOT 6  
LISA COURT CONDOMINIUMS  
400 WEST ELIZABETH AVE

BLOCK 287, LOT 6  
SEE SHEET 50

**TAX MAP**  
**CITY OF LINDEN**

UNION COUNTY NEW JERSEY  
SCALE: NOTED DATE: 5-1-2018  
CHARLES E. ADAMSON N.J.P.L.S. LIC. NO. 42627



**REMINGTON & VERNICK ENGINEERS**  
ONE HARMON PLAZA, SUITE 210, SECAUCUS, NJ 07094  
(201) 624-2137, FAX (201) 624-2136, WEB SITE ADDRESS: WWW.RVE.COM  
Certificate of Authorization: 24 GA 28003300  
-ENGINEERING EXCELLENCE-