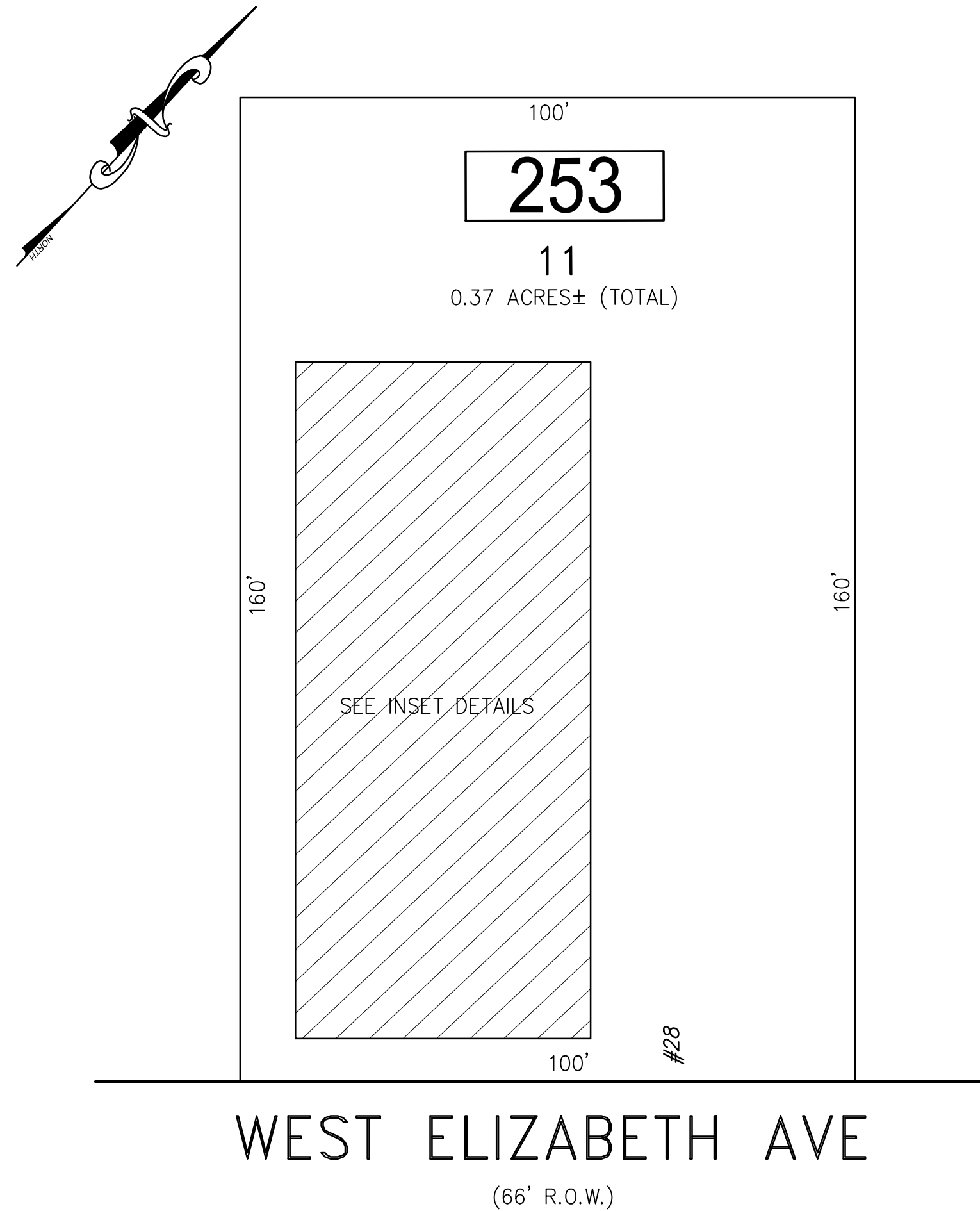
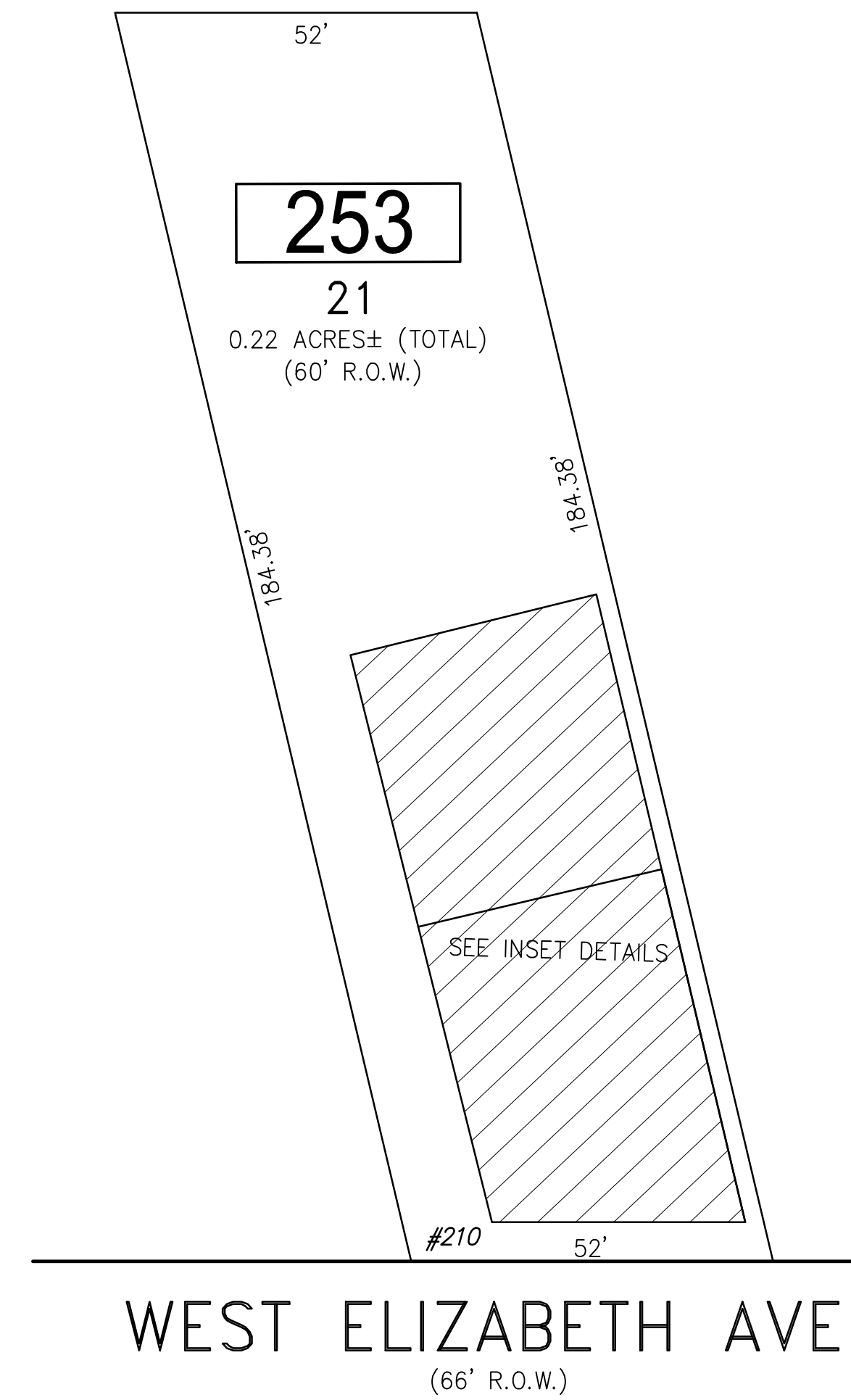


REVISIONS		
DATE	NAME	NO.

NOTE:
THIS SHEET HAS BEEN DRAWN USING COMPUTER AIDED DRAFTING/DESIGN (CAD/D) AND COORDINATE GEOMETRY (COGO).

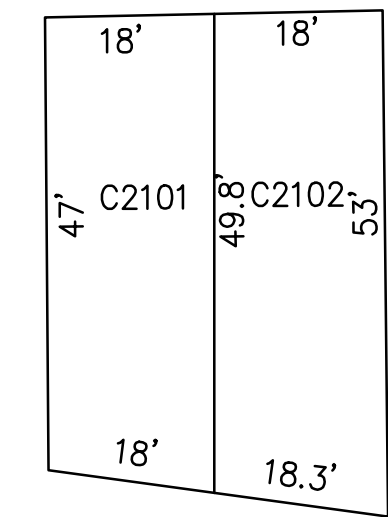


WEST ELIZABETH AVE
(66' R.O.W.)
PLAN
SCALE: 1"=20'

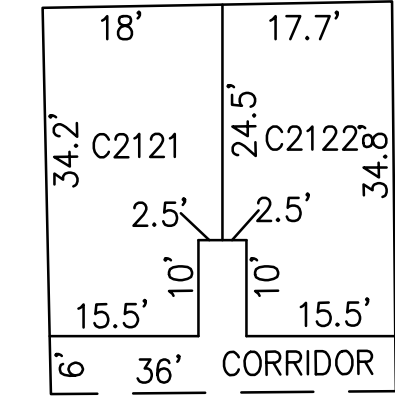


WEST ELIZABETH AVE
(66' R.O.W.)
PLAN
SCALE: 1"=20'

BLOCK 253, LOT 21
FIRST FLOOR

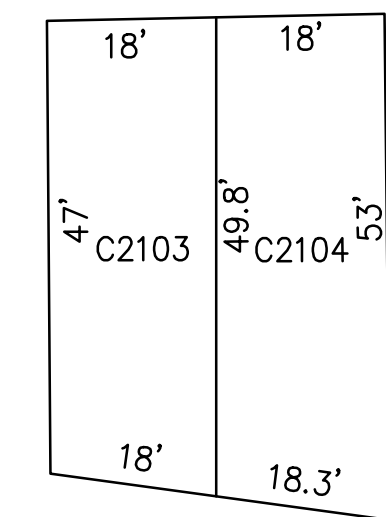


BLOCK 253, LOT 21
FIRST FLOOR REAR

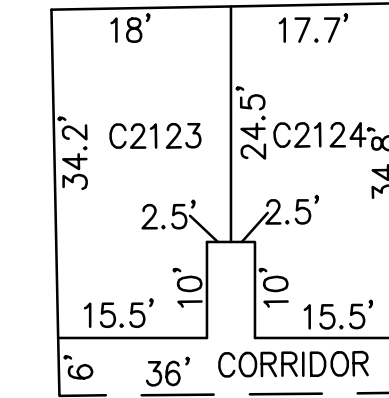


CONDO QUALIFIER	SQUARE FOOTAGE
C2101	1,761 SF.
C2102	1,761 SF.
C2103	1,761 SF.
C2104	1,761 SF.
C2121	1,800 SF.
C212B	1,800 SF.
C2123	1,800 SF.
C2124	1,800 SF.

BLOCK 253, LOT 21
FIRST FLOOR

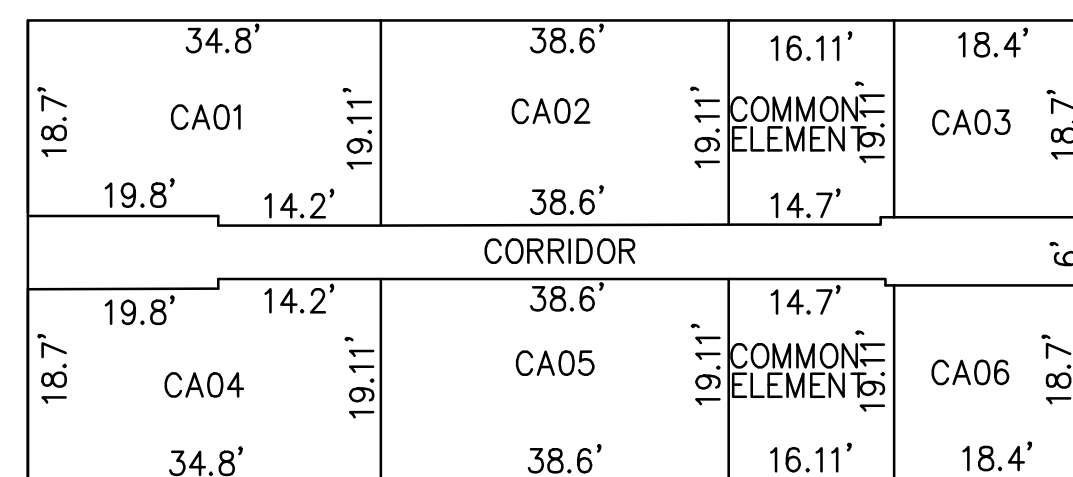


BLOCK 253, LOT 21
FIRST FLOOR REAR

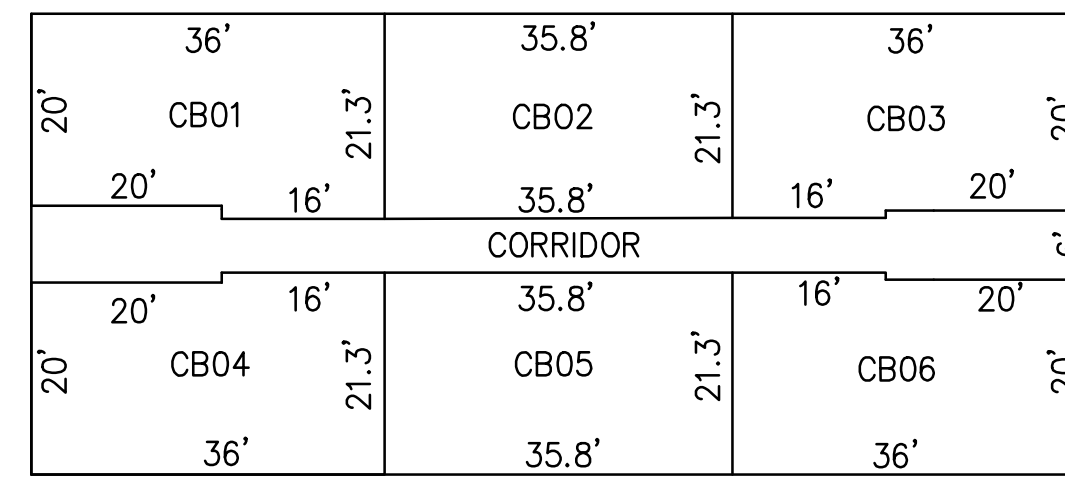


DETAILS
SCALE: 1"=20'

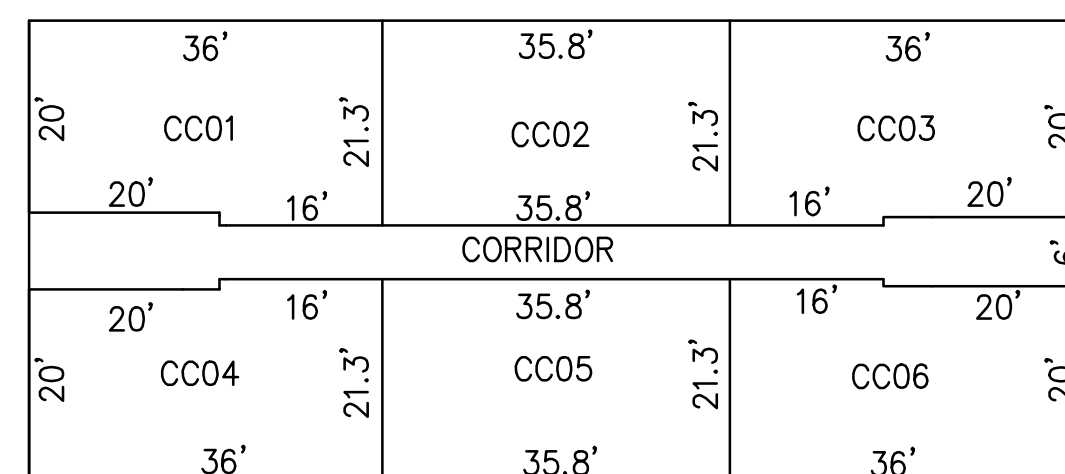
BLOCK 253, LOT 11
FIRST FLOOR



BLOCK 253, LOT 11
SECOND FLOOR



BLOCK 253, LOT 11
THIRD FLOOR



DETAILS
SCALE: 1"=20'

BLOCK 253, LOT 11
CONDOMINIUMS
28 WEST ELIZABETH AVE

CONDO QUALIFIER	SQUARE FOOTAGE
CA01	661 SF.
CA02	340 SF.
CA03	701 SF.
CA04	661 SF.
CA05	701 SF.
CA06	353 SF.
CB01	707 SF.
CB02	725 SF.
CB03	707 SF.
CB04	707 SF.
CB05	725 SF.
CB06	707 SF.
CC01	707 SF.
CC02	725 SF.
CC03	707 SF.
CC04	707 SF.
CC05	725 SF.
CC06	707 SF.

BLOCK 253, LOT 21
WOODHAVEN MANOR CONDOMINIUM
210 WEST ELIZABETH AVE

BLOCK 253, LOT 11
BLOCK 253, LOT 21
SEE SHEET 49

TAX MAP
CITY OF LINDEN

UNION COUNTY NEW JERSEY
SCALE: NOTED DATE: 5-1-2018

CHARLES E. ADAMSON N.J.P.L.S. LIC. NO. 42627



REMINGTON & VERNICK ENGINEERS

ONE HARMON PLAZA, SUITE 210, SECAUCUS, NJ 07094
(201) 624-2137, FAX (201) 624-2136, WEB SITE ADDRESS: WWW.RVE.COM
Certificate of Authorization: 24 GA 28003300

—ENGINEERING EXCELLENCE—