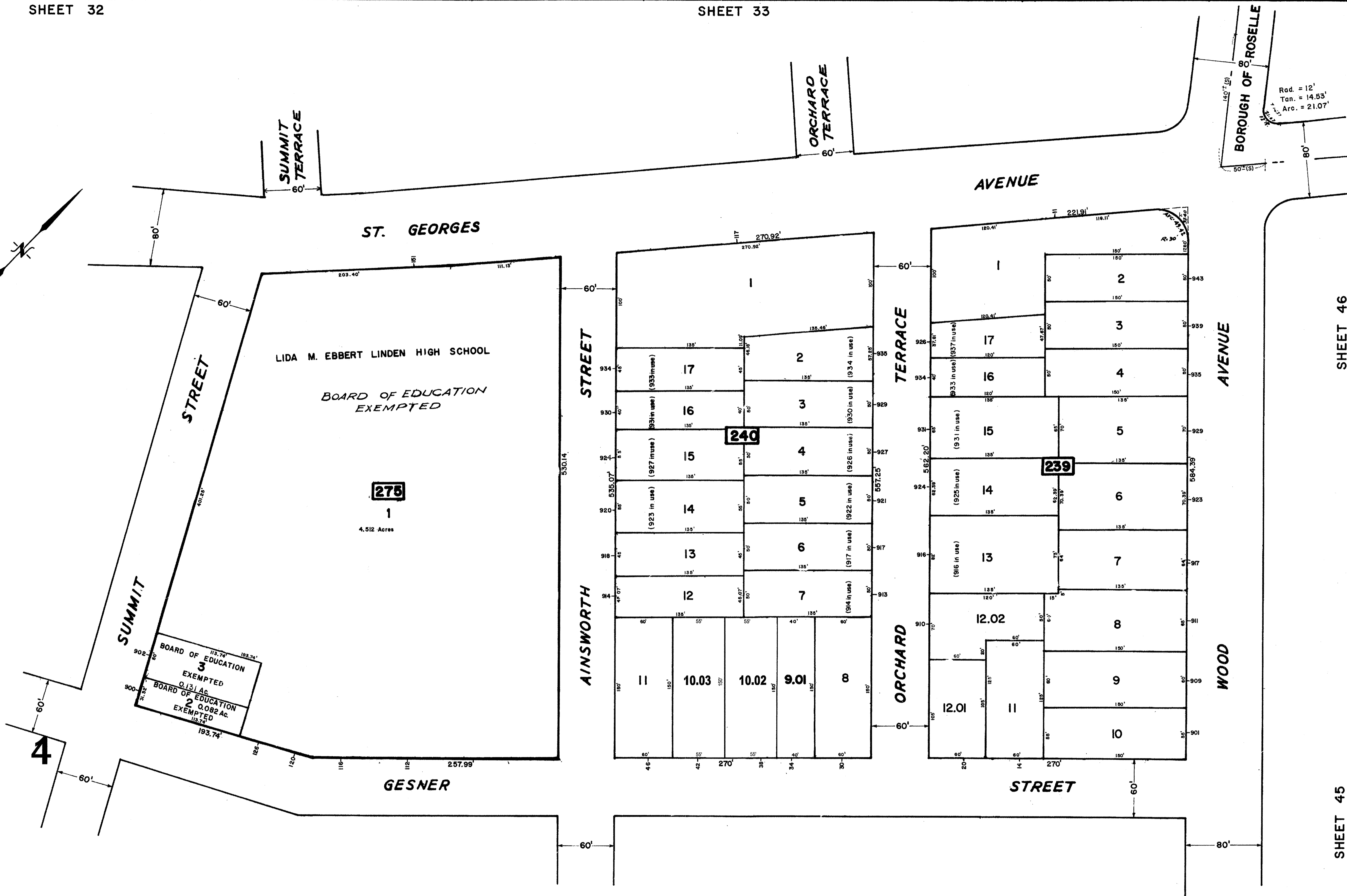
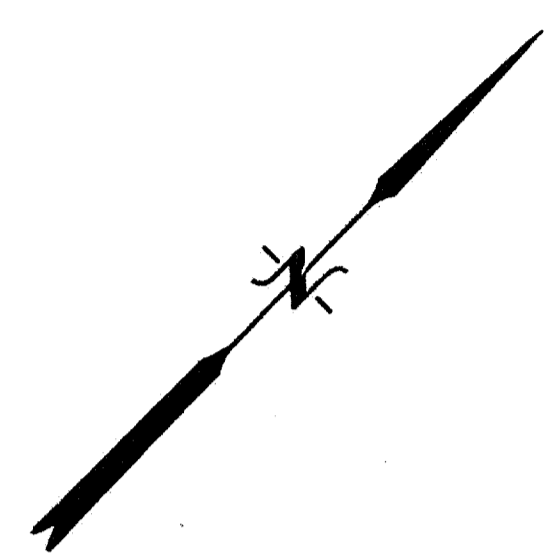


SHEET 40

SHEET 46

SHEET 45



REV.	DATE	DESCRIPTION	BY
3	1/17/77	BLOCK 240 LOTS 10.02 & 10.03	S.M.Y.
2	1/20/76	BLOCK 240 LOTS 10.02 AND 10.03	SEB.
1	5/17/74	BLOCK 240 LOTS 9 & 10	R.G.S.

The Areas, Boundaries and Dimensions shown on this Tax Map are derived from Ground Surveys, Aerial Surveys and Recorded Plans, Maps, Deeds and Wills, and are to be used for Assessment Purposes only.

NEW JERSEY DEPARTMENT OF THE TREASURY
 DIVISION OF TAXATION
 PUBLIC UTILITY TAX BUREAU
 APPROVED AS A TAX MAP PRESENT TO THE
 PROVISIONS OF CHAPTER 175 LAWS OF 1971, ETC.
 BY THE DIRECTOR, DIVISION OF TAXATION.
 JOHN A. ZIEMIAN, P.E., S.E.
 L.L.C. #3009
 DATE JAN. 15, 1974 SERIAL No. 529

TAX MAP
 CITY OF LINDEN
 UNION COUNTY, NEW JERSEY
 SCALE: 1" = 50' DATE: MARCH 1973
 JOHN A. ZIEMIAN - CITY ENGINEER
 THOMAS J. STRAPP - ASST. CITY ENGINEER