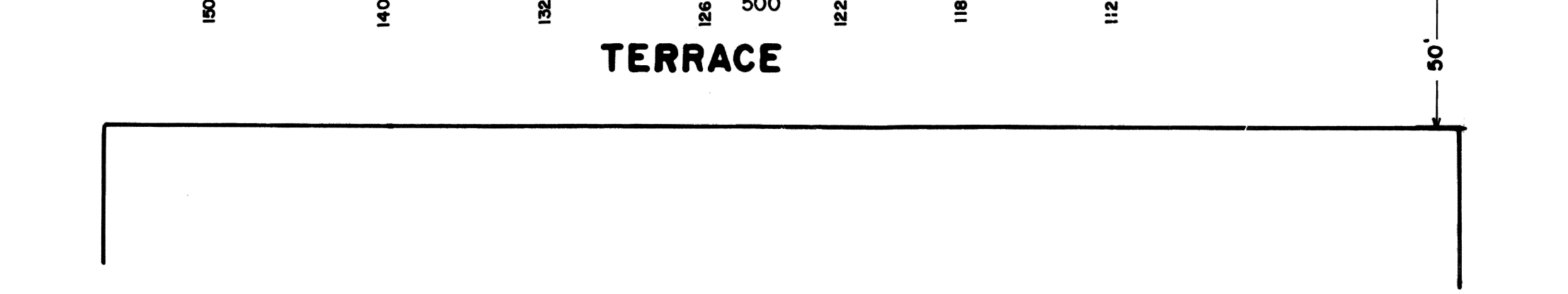
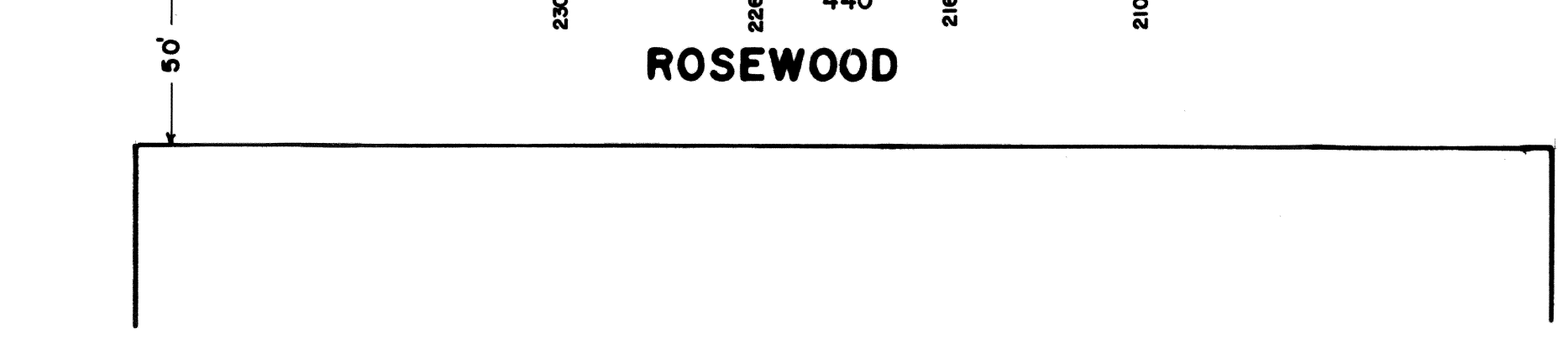
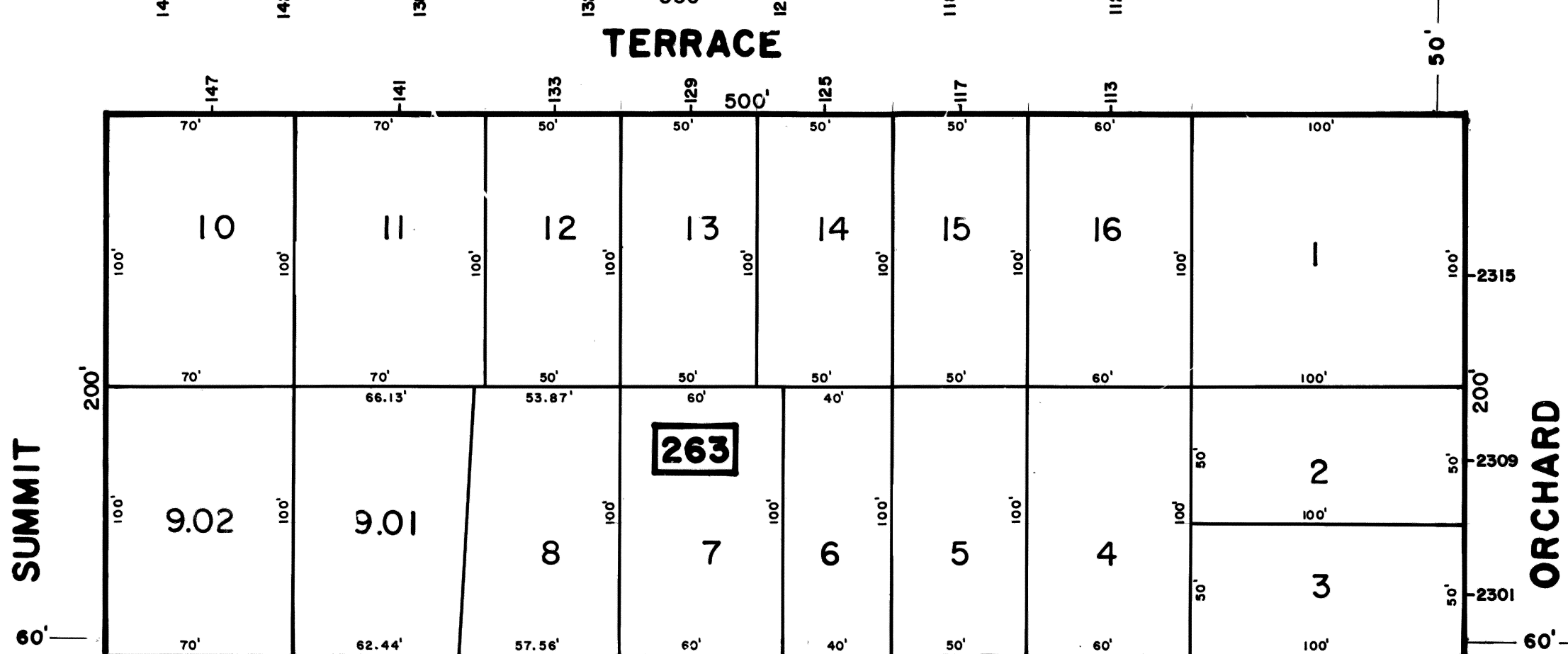
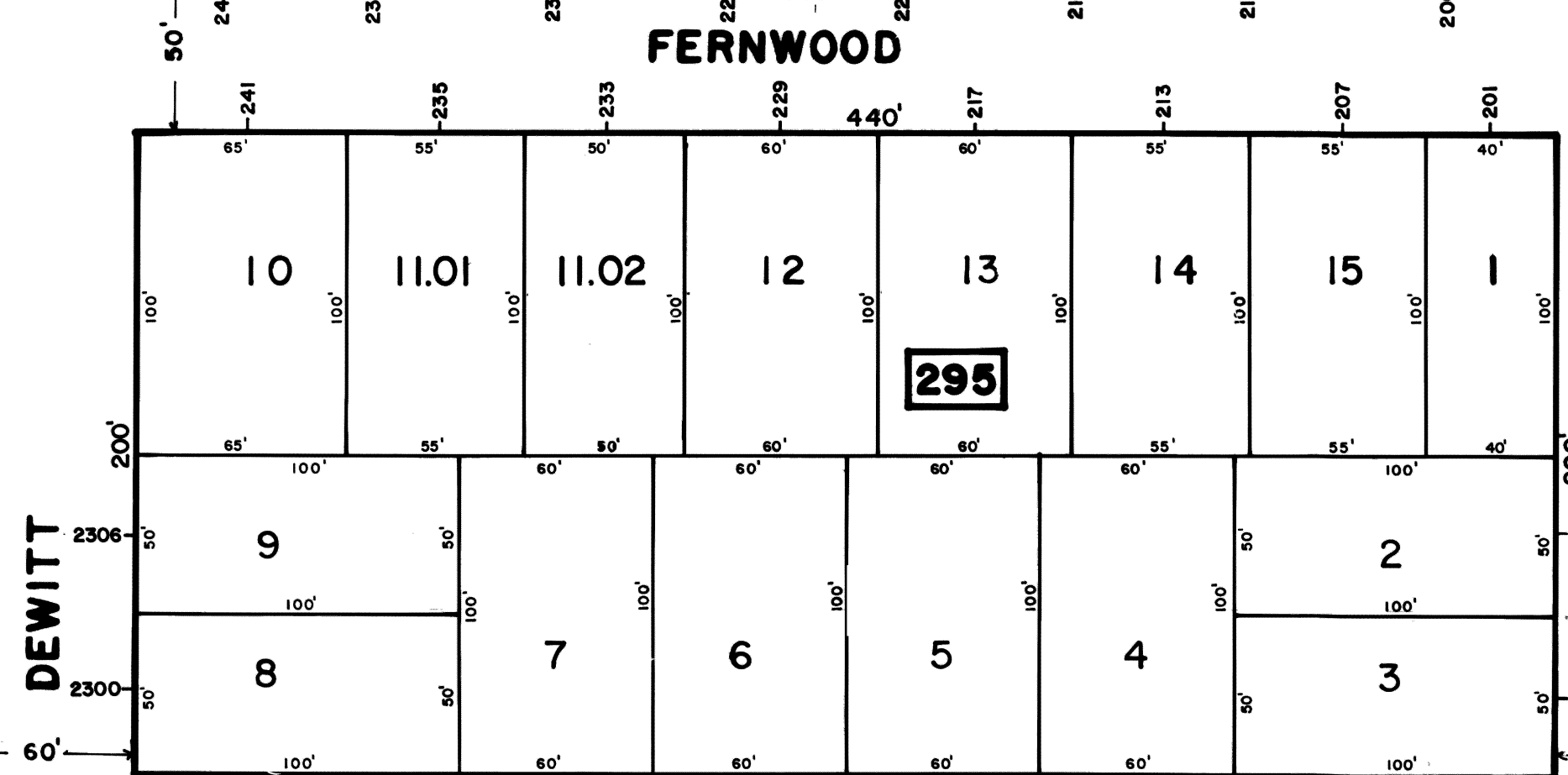
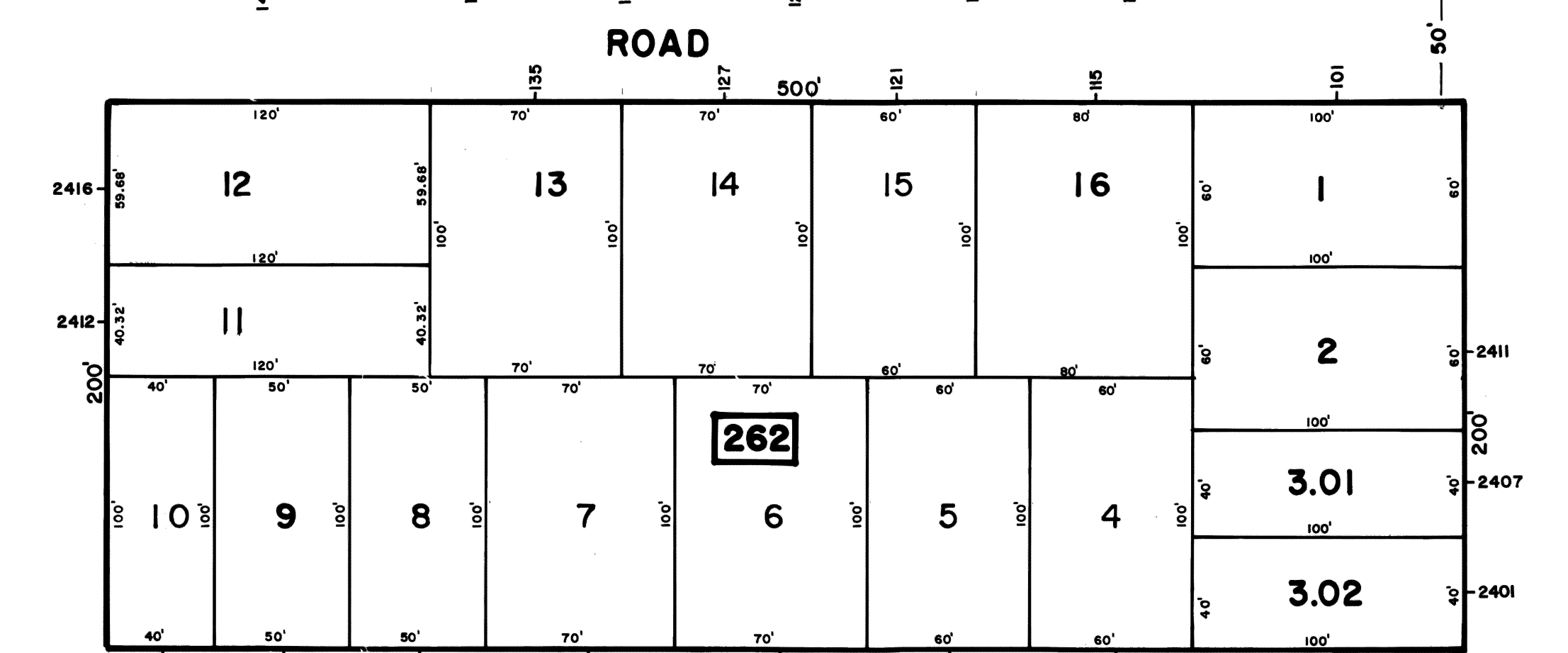
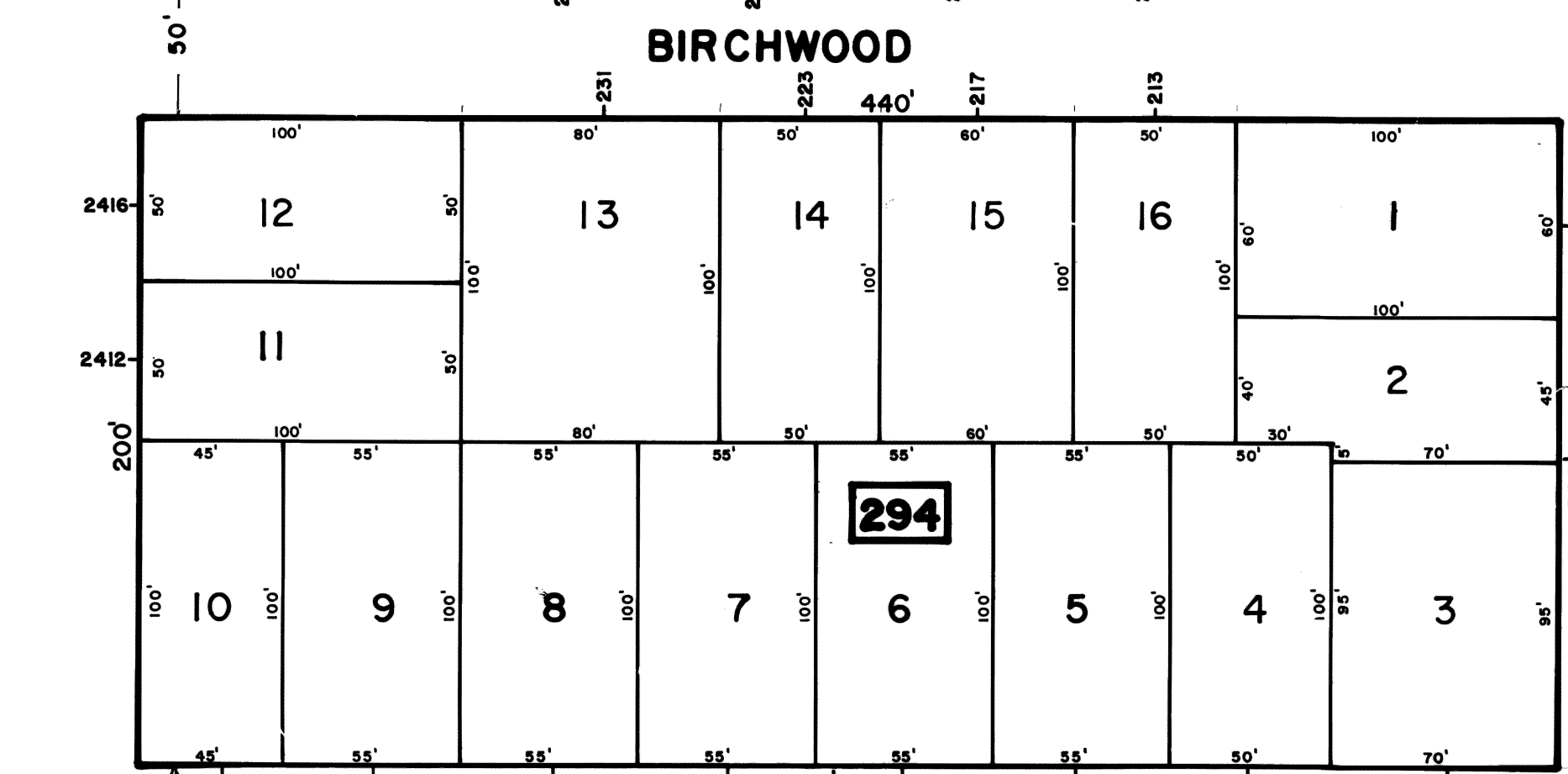
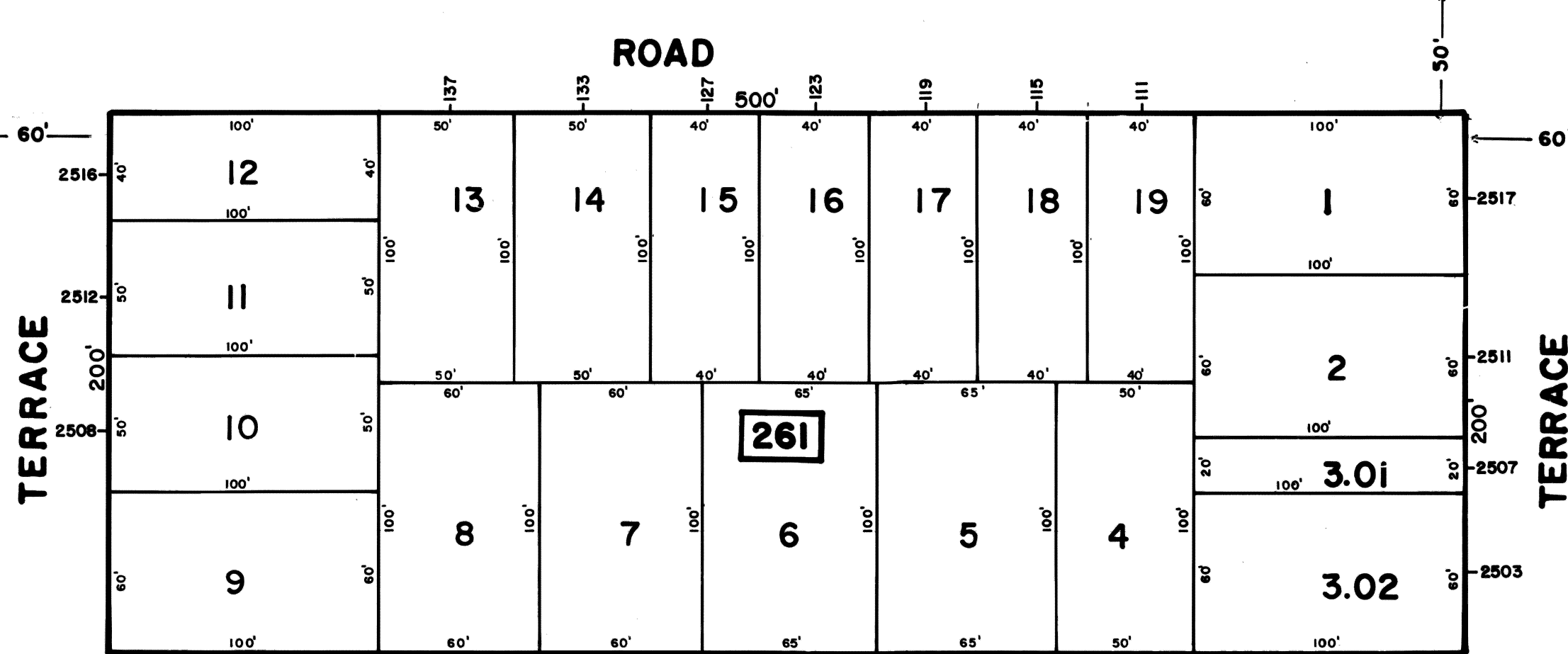
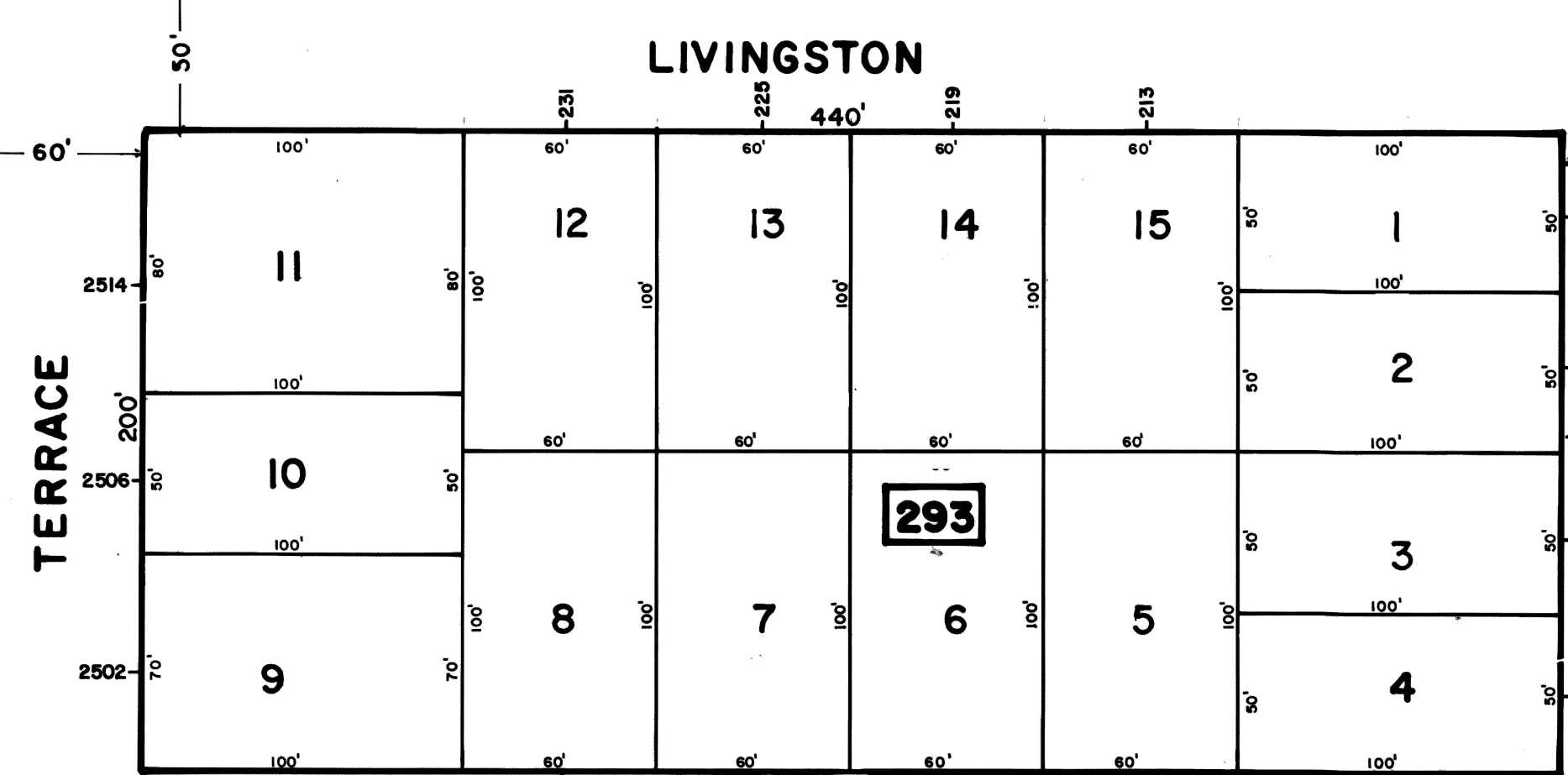
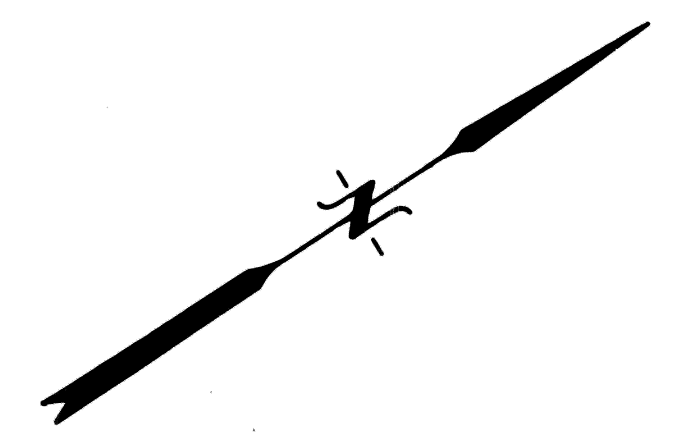


SHEET 11  
SHEET 16

SHEET 13

SHEET 14



REV.	DATE	DESCRIPTION	BY

The Areas, Boundaries and Dimensions shown on this Tax Map are derived from Ground Surveys, Aerial Surveys and Recorded Plans, Maps, Deeds and Wills, and are to be used for Assessment Purposes only.

NEW JERSEY DEPARTMENT OF THE TREASURY  
DIVISION OF TAXATION  
PUBLIC UTILITY TAX BUREAU  
APPROVED AS A TAX MAP PURSUANT TO THE PROVISIONS OF CHAPTER 125, L.A.S. 1973, BY THE DIRECTOR, DIVISION OF TAXATION.  
BY: *[Signature]* STATE ENGINEER  
DATE: JAN 16 1974 SERIAL No. 529

**TAX MAP**  
**CITY OF LINDEN**  
UNION COUNTY, NEW JERSEY  
SCALE: 1"=50' DATE: FEBRUARY 1973  
JOHN A. ZIEMIAN - CITY ENGINEER  
THOMAS J. STRAPP - ASST. CITY ENGINEER